

Conflict-free Scheduling Boosts Persistence & Enrollment Numbers

Enrollment rates continue to decline due to a combination of external challenges.



6 in 10 adults

Only 6 in 10 Adults Think that College is Worth the Time & Money

Source: Not All Americans Think Higher Ed is worth IT, Inside Higher Ed



International down 15%

Undergraduate International Student Enrollment is Down 15%

Source: Stay Informed with the Latest Enrollment Information, National Student Clearinghouse



First-timers down 13%

First-Time Undergraduate Student Enrollment is Down 13%

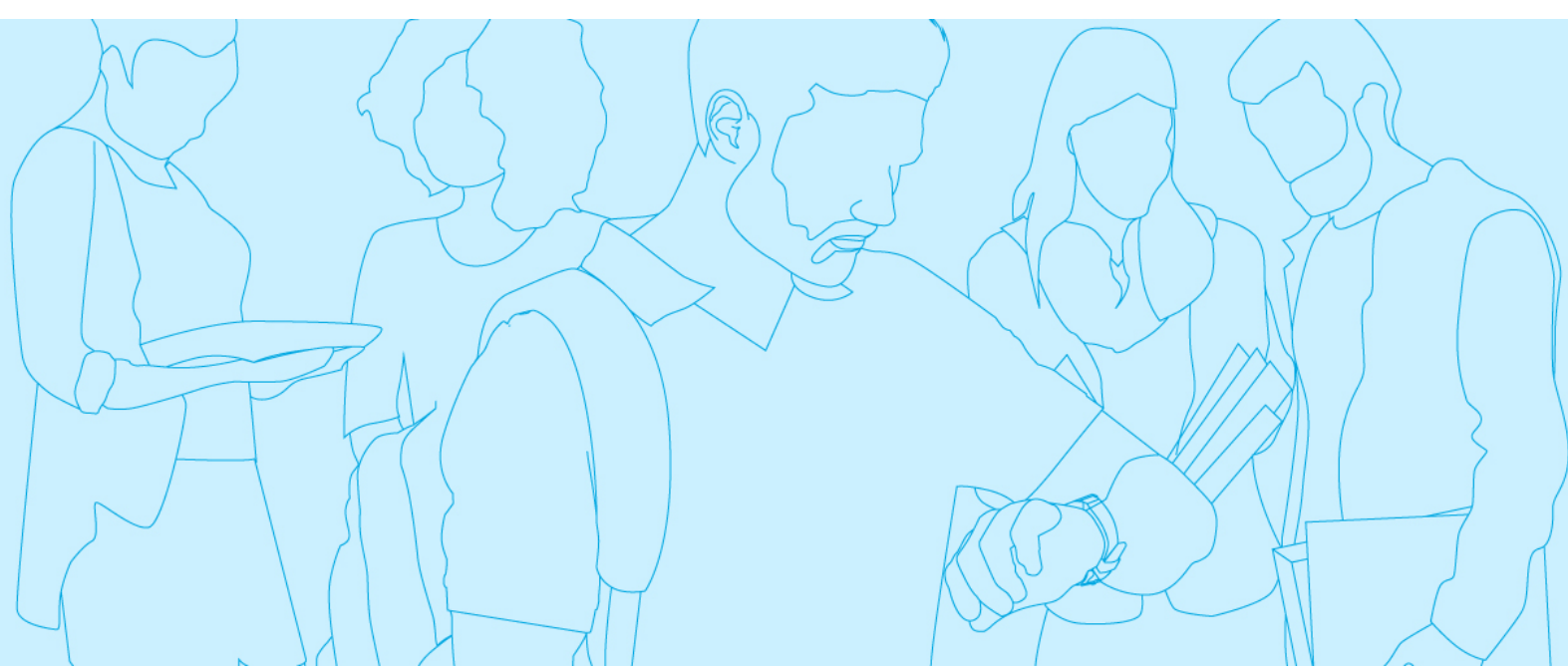
Source: Stay Informed with the Latest Enrollment Information, National Student Clearinghouse



15% population drop

15% Drop in College-Aged Population by 2026

Source: Demographics and the Demand for Higher Education, Nathan D. Grawe, John Hopkins University Press, 2018



Now more than ever, student retention is critical in order to meet institutional enrollment goals. To better understand the many factors that contribute to student attrition, we recently analyzed close to 400,000 students from our partner institutions. The results showed that complicated, disconnected scheduling and registration processes led to students taking fewer credits, enrolling in classes that didn't advance their progress, or deciding to take a semester off or stop out completely.

Institutions that Provided Students with a Simplified Scheduling Tool to Generate Conflict-Free Schedules Saw a Significant Lift in Persistence.

5.41%
Average Lift in Persistence

7.39%
Average Lift in Persistence of New Students

Using a diverse data set from 15 institutions, including both two-year and four-year schools, our analysis revealed an average lift of persistence of 5.41% among students actively using the Civitas Learning scheduling tool and even higher lift of 7.39% among new students. Our partner institutions are able to boost retention and lift persistence rates simply by making it easier for students to create schedules that balance learning and life.

Breakdown of Impact Analysis Results

Two/Four-Year	Public/Private	Retention Rate	Persistence Lift from Student Scheduling	Students Analyzed	Students Gained/Term
Two-Year	Public	61%	9.20%	28,533	219
Two-Year	Public	74%	6.70%	10,137	49
Two-Year	Public	64%	6.50%	4,060	22
Two-Year	Public	56%	6.60%	2,684	35
Four-Year	Private	85%	1.80%	35,689	64
Four-Year	Private	55%	3.50%	2,672	31
Four-Year	Public	75%	5.70%	61,636	502
Four-Year	Public	69%	6.00%	6,090	73
Four-Year	Public	89%	4.40%	38,766	213
Four-Year	Public	73%	3.40%	10,559	36
Four-Year	Public	65%	6.20%	30,616	211
Four-Year	Public	67%	7.70%	72,929	624
Four-Year	Public	76%	3.50%	11,248	49
Four-Year	Public	74%	4.60%	9,787	225
Four-Year	Public	73%	5.30%	57,541	339
			Mean: 5.41%	Total: 382,947	Mean: 179

Source: 2022 Impact analysis of Civitas Learning student scheduling tool across 15 institutions and nearly 400,000 students

Improve student retention and keep students on track with a student-centered, easy-to-navigate scheduling tool that delivers real results.

Want to learn more about the impact of improved student scheduling?

[Learn More](#)