

Creating a Routine Initiative Assessment Strategy

Many institutions overlook a powerful strategy for understanding student success: consistently evaluating student success initiatives. Regular and repeated analysis across various initiatives and policies helps pinpoint opportunities for improvement and investment.

These adjustments improve student persistence, establish better alignment across departments, elevate student engagement levels, and enhance ROI. Understanding what exactly improves outcomes and which students benefit most can be transformative.

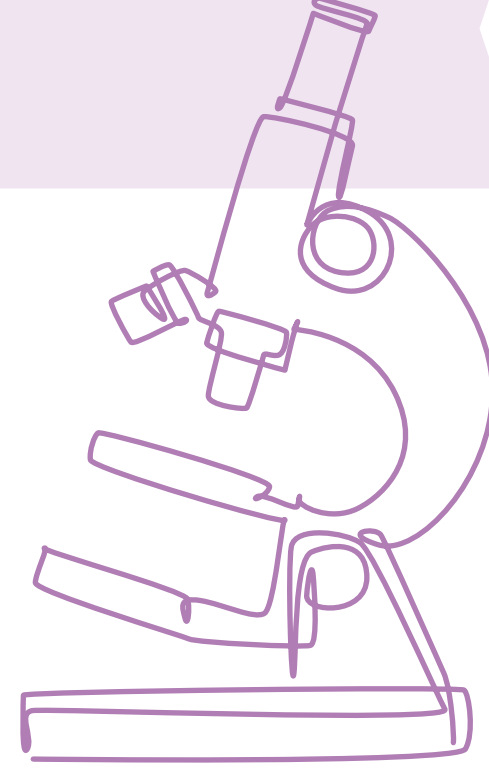
Here's how successful institutions incorporate initiative analysis into their strategic decision-making & planning:



1 Audit

What initiatives, policies, & services are already in place?

Administrators and department leads should conduct a thorough audit across all departments to understand what's available to support students so they can decide what initiatives and programs need a closer look.



2 Define

Leaders should determine clear objectives & pose a specific research question to guide the analysis.

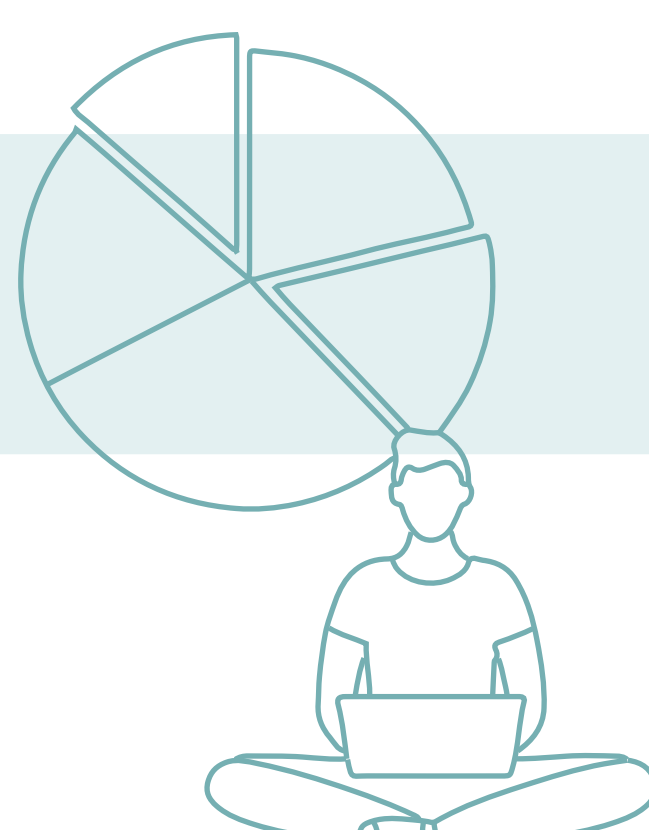
They should also define the activity, participants, and time frame for measurement. For example, they might ask, "Does being taught by a faculty member who completed 1+ training series in the prior term impact persistence?" Conducting both long-term and short-term evaluations is crucial for shaping strategies and allocating resources effectively.



3 Analyze

Establish a system for regularly assessing initiatives, allowing for timely adjustments to impact student outcomes.

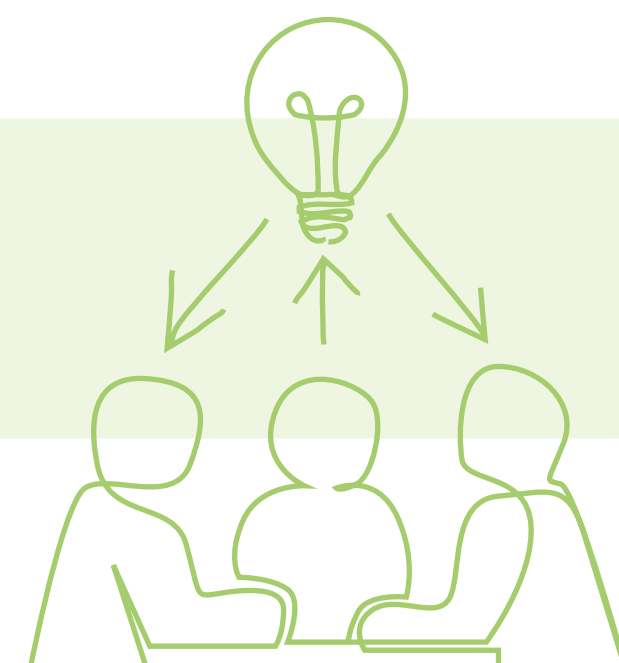
Administrators and leaders should collaborate with Institutional Research to schedule regular reviews. By integrating initiative efficacy assessment into strategic planning and decision-making, leaders can uncover hidden opportunities to target specific groups and allocate resources to the most impactful interventions, helping to achieve institutional goals.



4 Socialize

Administrators & departmental heads should create a culture of transparency by sharing initiative efficacy with stakeholders across the institution.

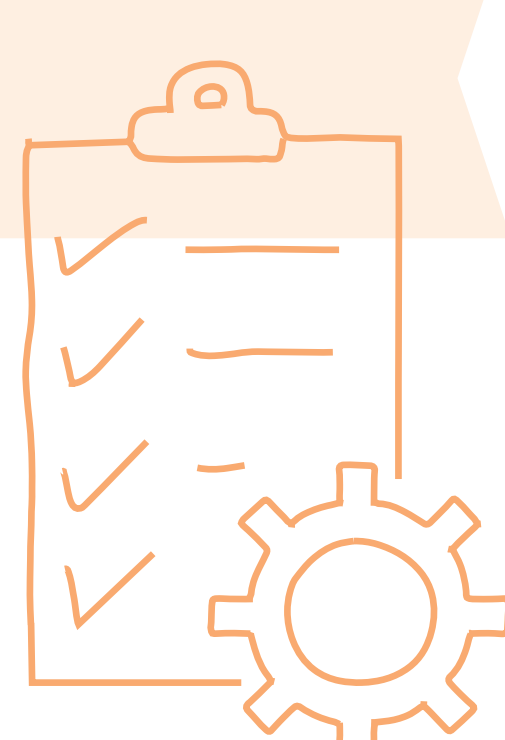
This approach encourages dialogue on how to best apply findings so there is alignment from the start. With a shared understanding of each initiative's impact on student persistence, leaders can make more informed and strategic investment decisions.



5 Act

Analysis that sits on a shelf might be interesting, but it doesn't drive change.

Leaders need to take action to see the desired outcomes. Whether changing a policy or connecting students with specific resources, focusing efforts equips institutions to iterate and improve student success outcomes over time.



By following these steps, institutions can create a routine for regular student success initiative analysis, ensuring continuous improvement and better outcomes for their students.