



# Enrollment Experience Impact on Student Persistence

A student-centered registration experience removes barriers to enrollment by making it easier for students to know where they're going and how to get there. Systemic enrollment barriers like cumbersome academic planning, misaligned course availability, and confusing registration processes hinder enrollment, leading to poor persistence and stressful student and staff experiences.

An analysis across 48 partner institutions and 3.9 million student records shows that collaborative academic planning and intelligent student scheduling are impactful strategies to improve retention and graduation rates.

This report shares a snapshot of what's working for the registration experience and serves as a benchmark to help your team explore how it might improve enrollment at your institution.

## Collaborative Academic Planning:

An integral part of the student registration process is ensuring they know which courses are required to earn their degree or credential and when to take them. For students and advisors, academic planning can be time-consuming and cumbersome, resulting in low participation, incomplete plans, and course registration mistakes.

Assigning advisors the task of preparing degree plans for students might seem like an intelligent way to keep students on track. However, involving students in planning allows them to actively prepare for their future and fosters connection with their advisor and the institution. Our analysis found that enabling students to design their academic plans with an advisor's guidance improved persistence.



- **Advisor-Made Degree Plans... -9.9 PP**

- **Collaborative Academic Planning... +7.0 PP**

Impact is measured using the percentage point (PP) lift each activity had on persistence, a leading indicator of student success.



Check out the full **Student Success Impact Report** for more on what's working for student success.

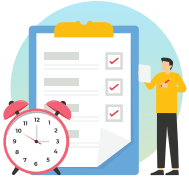
**Learn More**

Ready to remove systemic barriers to completion? Explore how Civitas Learning can help your institution create a streamlined enrollment experience.

Visit [www.civitaslearning.com/platform/planning/](http://www.civitaslearning.com/platform/planning/)

## Eased Class Schedule Building:

The simple act of scheduling classes can be a significant obstacle for students, often leading to lower persistence and completion rates. Many students must balance their coursework with other responsibilities, such as work and caregiving. Busy lives can make it difficult for students to find course offerings that fit their scheduling needs, causing delays in graduation. Our research shows that providing students with an intelligent schedule builder that automatically generates schedule options for students can significantly boost their persistence toward graduation. Helping students build schedules that accommodate their academic and personal lives leads to higher retention rates and on-time completion of educational goals.



- Eased Class Schedule Building... **+6.3 PP**

## Streamlined Registration Boosts Persistence for Those Least Likely to Persist:

Simplified registration significantly impacts persistence for the most vulnerable students. Clear degree pathways and easy course scheduling enable students to register for the right courses, helping them to make steady progress toward degree completion. This creates a better student experience and provides more time for advisors to focus on proactive support.



### LOW LIKELIHOOD TO PERSIST

- Collaborative Academic Planning... **13.1%**
- Eased Class Schedule Building... **13.0%**

### HIGH LIKELIHOOD TO PERSIST

- Collaborative Academic Planning... **1.6%**
- Eased Class Schedule Building... **2.5%**

## Registration Experience Impact On Different Student Groups:

Diversification of student success efforts makes it possible to deliver proactive support at scale. By analyzing student data for different populations, leaders can better understand the impact of various student success strategies on specific sub-groups – empowering their teams to design tailored interventions that make a difference for particular student populations.

### BY PERSISTENCE LIKELIHOOD

#### Very Low Likelihood to Persist:

- Collaborative Academic Planning... 13.1%
- Eased Class Schedule Building... 13.0%

#### High Likelihood to Persist:

- Collaborative Academic Planning... 5.1%
- Eased Class Schedule Building... 6.2%

### BY ENROLLMENT TYPE

#### First-Time in College:

- Collaborative Academic Planning... 6.8%
- Eased Class Schedule Building... 7.0%

#### Transfer:

- Collaborative Academic Plannin... 8.2%
- Eased Class Schedule Building... 6.8%

### BY ATTENDANCE STATUS

#### Part-Time:

- Collaborative Academic Planning... 10%
- Eased Class Schedule Building... 8.0%

#### Full-Time:

- Collaborative Academic Planning... 6.8%
- Eased Class Schedule Building... 7.0%

### BY RACE

#### Asian/Pacific Islander:

- Collaborative Academic Planning... 10.2%
- Eased Class Schedule Building... 9.2%

#### Black:

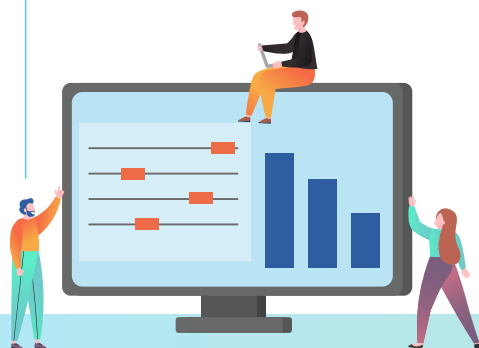
- Collaborative Academic Planning... 4.2%
- Eased Class Schedule Building... 6.8%

#### Hispanic/Latino:

- Collaborative Academic Planning... 6.7%
- Eased Class Schedule Building... 6.7%

#### White:

- Collaborative Academic Planning... 7.0%
- Eased Class Schedule Building... 6.4%



Ready to remove systemic barriers to completion? Explore how Civitas Learning can help your institution create a streamlined enrollment experience.

Visit [www.civitaslearning.com/platform/planning/](http://www.civitaslearning.com/platform/planning/)